

# Visualeyez Alarm Management System

## Product Overview

Visualeyez is a pictorial and textual aid for managing alarm activations in your work place. It can be programmed to suit any applications including: Hospitals, Universities, Prisons, Hotels, Industrial and Commercial buildings.

In an emergency, both information and control are paramount, without knowing what has occurred and where it happens it is difficult to provide an effective resolution of the situation. Visualeyez is designed to present the information in a simple, clear and user friendly way, allowing rapid comprehension of the situation.

In addition to the basic function of displaying alarms at a common location, the system also offers the ability to record and analyse both alarms and non-alarm events. This provides the building's engineers or management with the tools they need to analyse alarms, faults, review events, assess problems and plan their maintenance and false alarm prevention strategies.

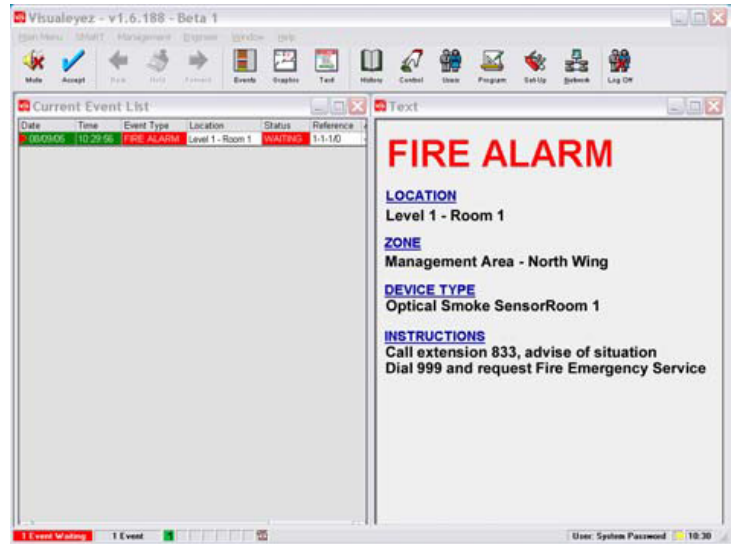
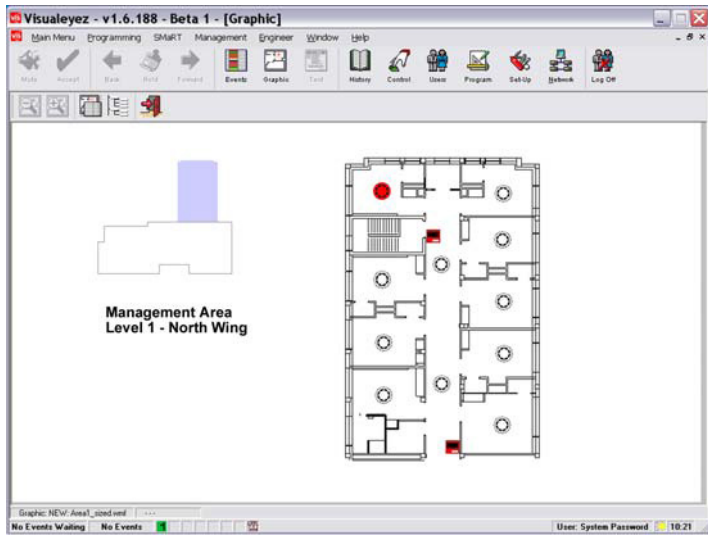
## Features

- Secure System
- Multiple Users
- Multiple PC Workstations
- Image, Plan or Text Displays
- Simple Navigation and Control
- Current Event List
- In-Depth History Analysis
- Integrates with ZXSe Series Control Panels
- Windows™ 7 and 8 Compatible
- Choice of Specification
- Remote System connectivity (additional hardware required)



by Honeywell

Visualeyez is designed to present information in a simple, clear and user friendly environment. Alarm information can be presented to users as both graphical and text instructions, allowing rapid comprehension of the situation.

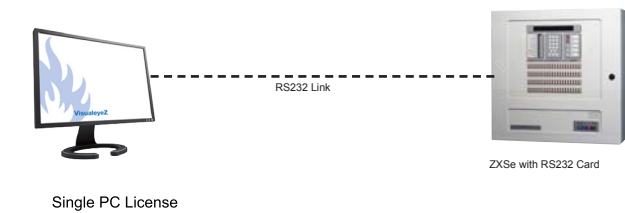


Clear, concise information and instructions with optional control functions are available to manage the incident. (Visualise the situation.)

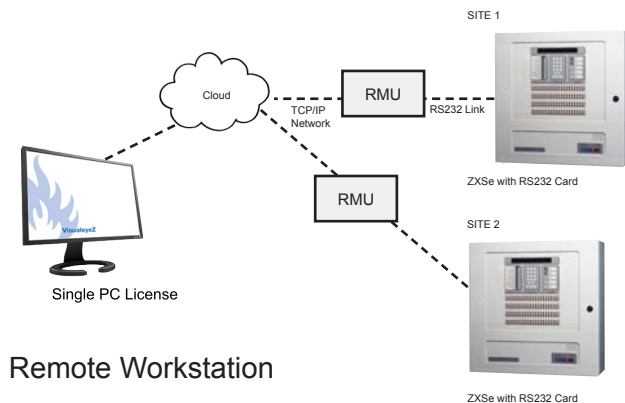
## Installation

The system is available in a number of standard configurations, providing a cost effective configurable solution to suit your project requirements.

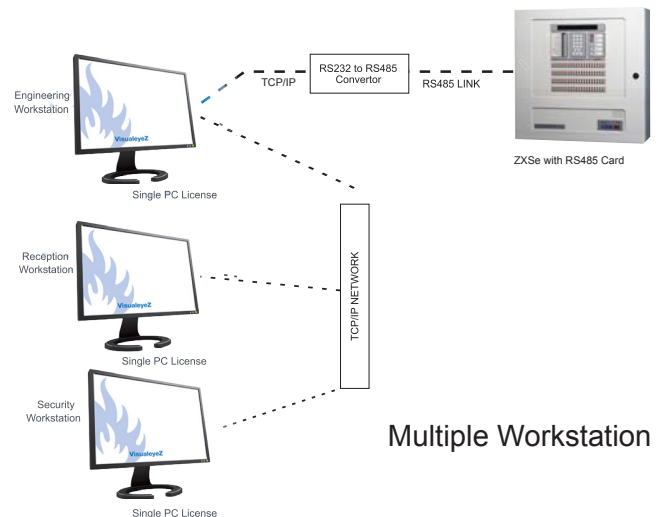
Fire panel compatibility and seamless integration with the ZXSe range of fire alarm control panels is easily achieved, simplifying setup and programming thereby reducing commissioning costs. Communication between the fire alarm control panel and PC is constantly monitored providing instant warning of a possible systems fault. It can be programmed to suit most application including Hospitals, Universities, Prisons, Hotels, Commercial Buildings, Factories and Museums.



Single Workstation



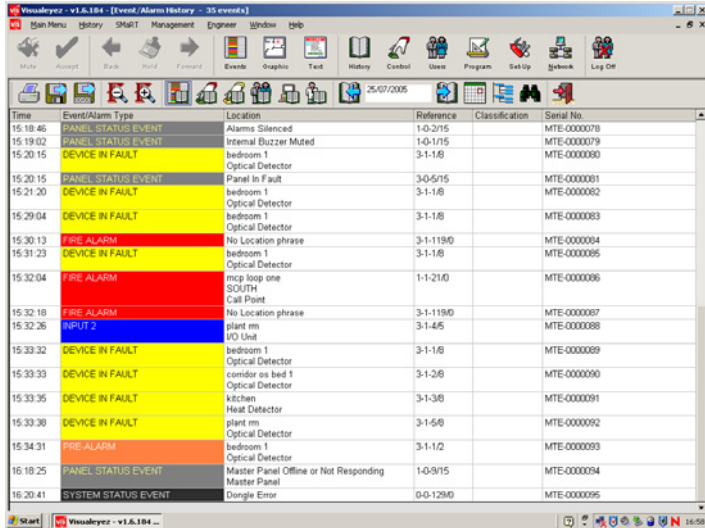
Remote Workstation



Multiple Workstation

# Incident Management

Incident management is just one element provided by the system, Visualeyex allows you to document and audit the history of the system using the powerful comprehensive logging facilities. Classify each alarm according to it's nature – False alarm due to burnt toast, False alarm with good intentions, etc ... Utilise the built in classifications or create your own. Highlight areas that generate the highest number of alarms to improve your system's performance.



Date	Time	Event/Alarm Type	Location
25/07/05	15:29:04	DEVICE IN FAULT	bedroom 1
		Optical Detector	
25/07/05	15:30:13	FIRE ALARM	No Location phrase
25/07/05	15:31:23	DEVICE IN FAULT	bedroom 1
		Optical Detector	
25/07/05	15:32:04	FIRE ALARM	mcp loop one SOUTH Call Point
25/07/05	15:32:18	FIRE ALARM	No Location phrase
25/07/05	15:32:26	INPUT 2	plant rm I/O Unit
25/07/05	15:33:32	DEVICE IN FAULT	bedroom 1
		Optical Detector	
25/07/05	15:33:33	DEVICE IN FAULT	corridor os bed 1
		Optical Detector	
25/07/05	15:33:35	DEVICE IN FAULT	Kitchen Heat Detector
25/07/05	15:33:38	DEVICE IN FAULT	Optical Detector
		Optical Detector	
25/07/05	15:34:31	PRE-ALARM	bedroom 1
25/07/05	16:18:25	PANEL STATUS EVENT	Optical Detector
		Master Panel Offline or Not Responding	
		Master Panel	

Printed by System Password - 17:10 10/08/05 Page 1

# Remote Connectivity

With the latest edition of our remote monitoring units, it is now possible to connect the serial data from the panels via an ethernet connection utilising the local area network or communication via Interweb. This new way of connecting the workstation to the fire system allows users to have real time event information, enabling them to proactively manage their system and receive vital system data no matter where they're located.

## PC Specification (standalone)

---

Processor	Intel Pentium or equivalent 2 GHz or better 32 or 64 bit
Operating System	Windows 7 and 8
Memory	1 GB min.
Disk Space	80 Gb minimum
Graphics	1024x768 – 16 million colours
Sound Card	Windows Compatible
Loudspeakers	Any amplifier and speakers
Monitor	Any
Pointing Device	A mouse is essential
Printer	Optional
RS 232 Serial Ports	1-6 (application dependant)
RS 485 Serial Ports	Subject to system configuration
LAN Port	Optional
USB Port	One minimum
CD Rom	Yes
BackUp Device	External disk or USB memory stick (flash drive)
PCI Expansion slots	Only for RS484 interfaces

---

## Part Numbers

<b>Software and Dongle Packages</b>	
795-088-600	<b>Visualeyez 1</b> software and regular licence enables the display of key information from their analogue addressable fire detection and fire alarm system. Supports one panel and can be upgraded with the features below to extend the software's capabilities.
795-088-601	<b>Visualeyez 3</b> software and regular licence enables the display of key information from their analogue addressable fire detection and fire alarm system. Supports three panels and can be upgraded with the features below to extend the software's capabilities.
795-088-602	<b>Visualeyez 16</b> software and regular licence enables the display of key information from their analogue addressable fire detection and fire alarm system. Supports sixteen panels and can be upgraded with the features below to extend the software's capabilities.
795-088-603	<b>Visualeyez 99</b> software and regular licence enables the display of key information from their analogue addressable fire detection and fire alarm system. Supports ninety nine panels and can be upgraded with the features below to extend the software's capabilities.
<b>Remote Connection Hardware</b>	
795-088-604	<b>Visualeyez IP DXcRMU15.</b> Provides an IP interface from your DXc panel to your Visualeyez graphics package. Supports a network of up to 15 panels.
795-088-605	<b>Visualeyez IP ZXSeRMU4.</b> Provides an IP interface from your ZXse panel to your Visualeyez graphics package. Supports a network of up to four panels.
795-088-606	<b>Visualeyez IP ZXSeRMU12.</b> Provides an IP interface from your ZXse panel to your Visualeyez graphics package. Supports a network of up to twelve panels.
795-088-607	<b>Visualeyez Cube – ZXSeRMU99.</b> Provides an IP interface from your ZXse panel to your Visualeyez graphics package. Supports a network of up to ninety-nine panels.
795-088-608	<b>Visualeyez IP Volt free RMU4 interface.</b> Provides an IP interface for up to four volt free inputs to your Visualeyez graphics package.
<b>Software Upgrade Packages</b>	
795-088-609	<b>Graphics Auto Update upgrade.</b> When more than one Visualeyez is connected in a group the standard practice when upgrading one is to take a backup and travel to each terminal to restore each one independently. The new auto update module allows a user to make changes on one master Visualeyez and propagates the changes to any other master/slave connected via groups. This mimics a client/ server application and drastically reduces upgrade times.
795-088-610	<b>Graphics Service &amp; History upgrade</b> allows users to produce service reports which accurately show the total percentage of devices being tested on an annual basis. This module can be used by both the end user and Service provider as a way to demonstrate value adds and commitment to testing 100% of sites devices.
795-088-611	<b>Graphics Event Printer upgrade.</b> The event printer option gives users the ability to connect Line printers to the Visualeyez terminal. With recent developments in the software, the capability to automatically print a graphic from a normal printer or laser printer in an alarm condition now comes as standard on all packages.
795-088-612	<b>Graphics Email upgrade.</b> Visualeyez is now capable of send emails when an event occurs. Each event can be sent to a multitude of addresses. This means for example that Fire events can be sent to person A,B and C whilst faults are sent to person X, Y and Z. Email can be configured to only be sent during certain times. Two types of email can be sent. Either a single alarm message or a generalised overview of alarms in a certain period of time.
795-088-613	<b>Graphics Slave Licence per slave upgrade.</b> A slave is a non control version of the Visualeyez software. A slave will allow for 24 hour, real time monitoring from a master terminal with reporting and accept alarm capabilities but will not allow control of the panel and devices. A slave will gather its information from a master and cannot be connected to a panel or panel network. A licence is required for each additional station required to be connected to the master.

For further details on these or any other Morley-IAS products please contact your local distributor, Morley-IAS Business Manager or via our contact details found below.  
Morley-IAS by Honeywell - Providing a control panel solution, for fire industry professionals, committed to supporting our device partners.



Caburn House  
2B Brooks Road  
Lewes, E. Sussex  
BN7 2BY UK

T: +44 (0) 1273 897 000  
F: +44 (0) 1273 376 894  
E: [sales@morleyias.co.uk](mailto:sales@morleyias.co.uk)  
[www.morley-ias.co.uk](http://www.morley-ias.co.uk)